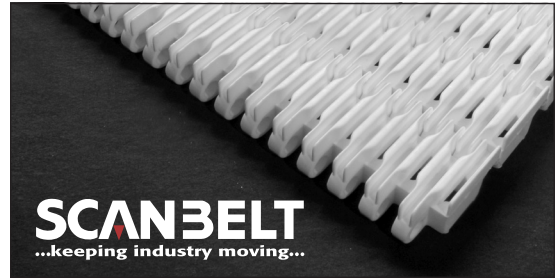


# S.25-420

Ideal choice for medium-duty transportation etc.  
Transport of small products, such as bottles,  
glass and machine components.  
FDA approved.



**SCANBELT**  
...keeping industry moving...

## SUGGESTED INDUSTRIES

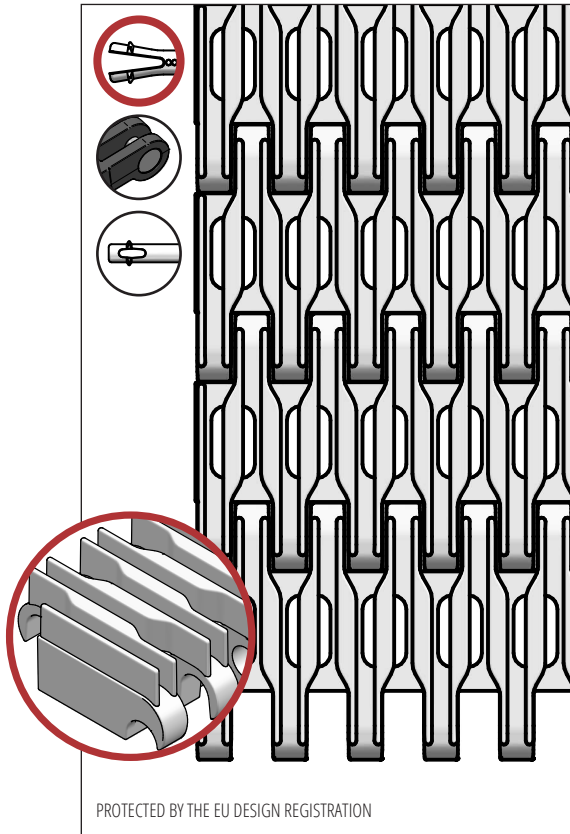


## STANDARD FEATURES

Belt surface	Raised ribs 5 mm, drained
Open area	14 %. Biggest opening 10 x 2 mm
Strength	Ideal choice for medium-duty transportation
Cleanability	Excellent. FSIS
Standard width	Increments of 10 mm, e.g. 100 mm, 110 mm etc.

## BELT DATA

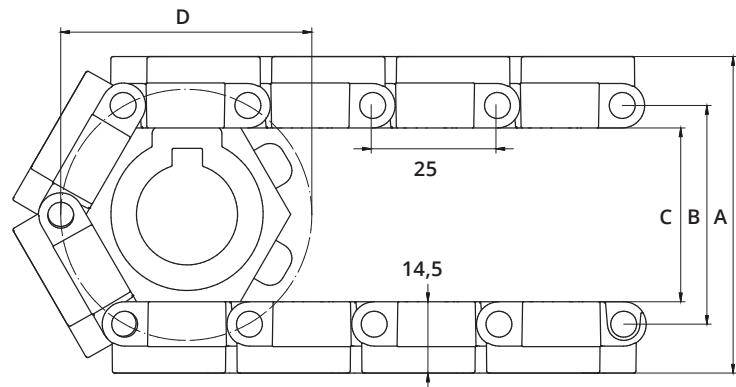
Belt materials	Temperature range		Max. belt pull kg/m of width	Belt weight kg/m <sup>2</sup>	Belt weight kg/m <sup>2</sup> w. steel rods	Standard Colours
	Min.	Max.				
PE	- 73	66	900	8	13,5	Blue/Natural
PP	+ 5	100	1200	8	13,5	Blue/White/Grey
POM	- 43	95	2400	11	16,5	Blue/Natural



PROTECTED BY THE EU DESIGN REGISTRATION

## ACCESSORIES

Type	mm
Flights	-
Scoop Flights	-
Bent Flights	-
Supported Flights	-
Flights fitted with a Round Top	-
Side Guards	-
Finger Transfer Plates	Yes
Hold-downs	-



## SPROCKET DATA

A = Outside, B = Pitch, C = Inside, D = Pitch Circle Diameter

No. Teeth	A	B	C	D	Hub Width	Round Bore		Square Bore	
	mm	mm	mm	mm		mm	Inch	mm	Inch
6	65	45	36	52	20	20			
8	82	62	53	66	20	20 / 25	1	25	
12	116	96	87	99	20	20 / 25 / 30 / 40	1 / 1¼	25 / 40	1½
20	182	162	153	164	35	25 / 30 / 40	1 / 1¼	25 / 40 / 60	1½ / 2½